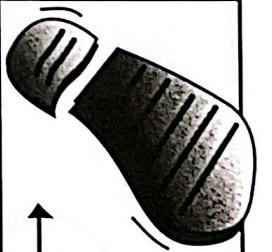


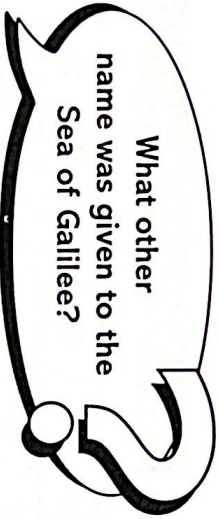
Footprints

MARK 6:30-34

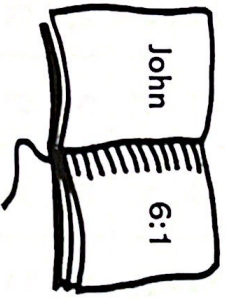


Think and Look Ahead

What other name was given to the Sea of Galilee?

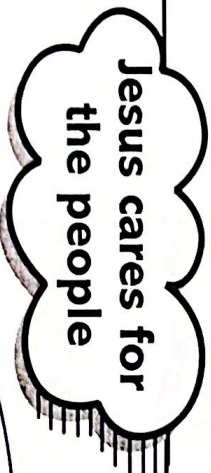


FIND OUT



The sea of

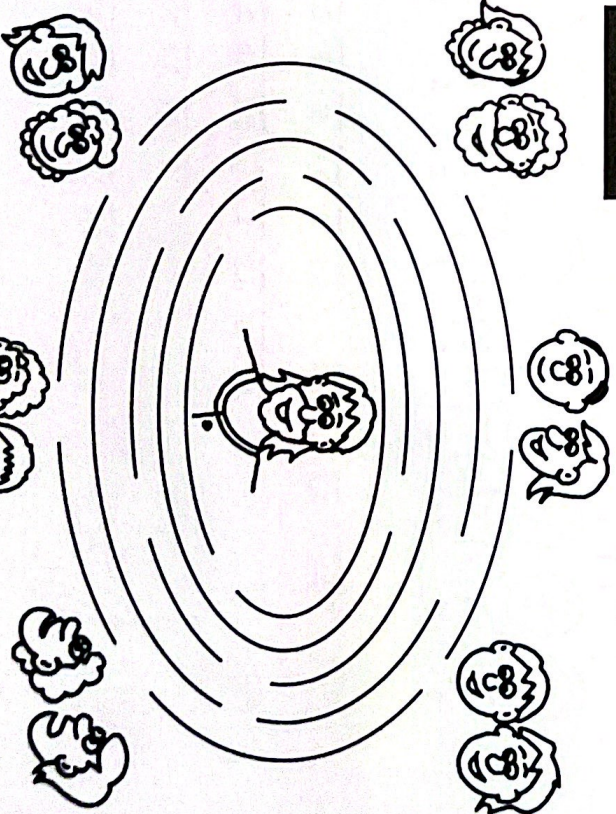
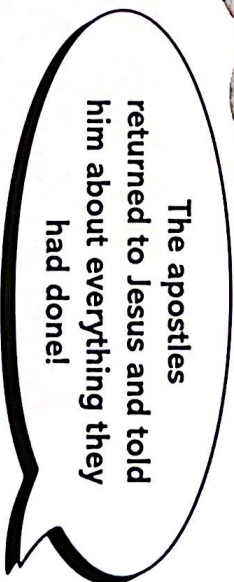
Jesus cares for the people



Help each pair to find their way back to Jesus



The apostles returned to Jesus and told him about everything they had done!



Mark 6:30

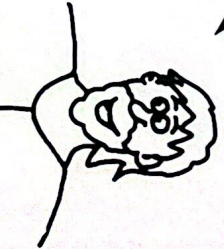
Crowds of people followed them, and the apostles had no time even to eat!

Follow the arrows to see what Jesus said to them

J	P	B	C	Y	T	B	O	C
L	R	A	A	O	A	E	L	B
M	M	W	E	M	L	M	E	Y
P	E	A	P	Ⓢ	O	N	P	L
S	A	W	O	E	S	A	L	E
W	O	R	F	T	R	N	C	E
H	I	W	E	M	S	D	A	B
P	S	L	I	R	P	M	C	F


Ⓢ

→ ← ↗ ↘ ↙ ↚ ↛ ↜ ↝ ↞ ↠ ↡ ↢ ↣ ↤ ↥ ↦ ↧ ↨ ↩ ↪ ↫ ↬ ↭ ↮ ↯ ↰ ↱ ↲ ↳ ↴ ↵ ↶ ↷ ↸ ↹ ↺ ↻ ↼ ↽ ↾ ↿ ⇀ ⇁ ⇂ ⇃ ⇄ ⇅ ⇆ ⇇ ⇈ ⇉ ⇊ ⇋ ⇌ ⇍ ⇎ ⇏ ⇐ ⇑ ⇒ ⇓ ⇔ ⇕ ⇖ ⇗ ⇘ ⇙ ⇚ ⇛ ⇜ ⇝ ⇞ ⇟ ⇠ ⇡ ⇢ ⇣ ⇤ ⇥ ⇦ ⇧ ⇨ ⇩ ⇪ ⇫ ⇬ ⇭ ⇮ ⇯ ⇰ ⇱ ⇲ ⇳ ⇴ ⇵ ⇶ ⇷ ⇸ ⇹ ⇺ ⇻ ⇼ ⇽ ⇾ ⇿

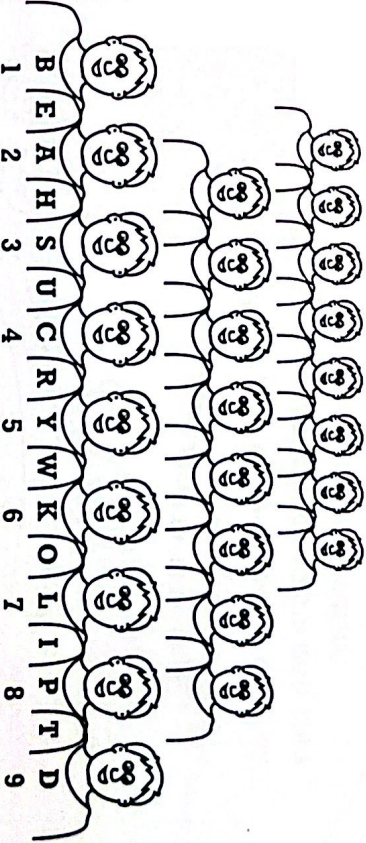


Mark 6:31

They set off by boat but a large crowd waited to greet them! Why did Jesus have pity on them?



Use the code to find out!



B E A H S U C R Y W K O L I P T D

1 1,2 4 2 3,4 3 1,2 8,9 2,3 1,2 5

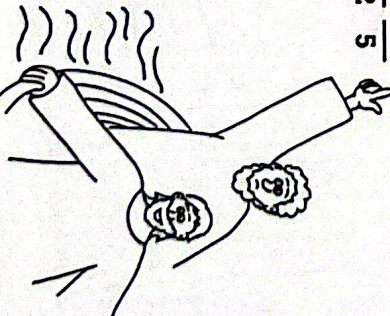
5,6 1,2 4,5 1,2 7 7,8 6 1,2

3 2,3 1,2 1,2 8

5,6 7,8 8,9 2,3 6,7 3,4 8,9

2

3 2,3 1,2 8 2,3 1,2 4,5 9



Mark 6:34